



NORTH RIDGE PUMPS
ENGINEERED BEYOND YOUR NEEDS

FIG90

Flanged Inline Connections,
Close Coupled & Extended
Gear Length Internal Gear
Pumps Range

FIG90 Internal Gear Pump with 90° Flanged Connections

Our internal gear pumps are designed to handle clean low – high viscosity lubricating fluids, being positive displacement pump types our FIG90 gear pumps are suitable for high pressure applications up to 14 bar depending on the model configuration selected. The pumping action is done by the rotation of intermeshing gears and a rotor designed to push the fluid at towards the outlet side of the pump, due to the extremely tight clearances between the gears these pumps are only suitable for lubricating clean liquids.

Some of the most common fluids our internal gear pumps are used for are fuels, oils, greases, resins and adhesives. Our gear pumps are manufactured according to UKCA and CE Standards and therefore comply with all current European quality demands and regulations, our simplistic design designed construction with only two moving/rotating components along with the exceptional tight clearance within the internal moving parts is the secret for our gear pumps high efficiency

as there is almost zero slip whilst in operation meaning these pump's energy consumption is minimal making them consequently a great option for continuous operation, (24/7) applications.

Our internal gear pumps can be supplied with external bypass valve and external heating jacket upon request, these pumps are also available with ATEX (explosion proof) motors for hazardous non-safe environments and applications, the FIG90 pump range is available with a variety of seal types such as mechanical seal, cartridge seal, packing seal and lip seals.

Thanks to having various construction materials along with a range of pump sizes, different sealing options and their 200 °C max. operating temperature our internal gear pumps can be used for a wide range of applications and almost any non-corrosive clean fluid specifically where a non-pulsating flow is necessary, they can also be supplied with marine class certification upon request hence are perfectly suitable for marine use.



Applications/Fluids:

- Coolant
- Kerosene/gasoline
- Diesel fuel
- Hot oil
- Grease
- Bitumen
- Asphalt
- Edible oils
- Crude oil and fuel oil
- Paint, resins, emulsions & coatings
- Soap and detergents
- Food process plants
- Heat transfer

Design Features/Benefits:

- Available with several sealing options – cartridge seal, packing, single mechanical seal, lip seal etc.
- ATEX certified upon request
- Supplied with 90° flanged connections
- High efficiency due to exceptional tight clearances
- Fantastic self-priming capabilities
- Optional external heating jacket
- Manufactured according to UKCA and CE Standards
- Max fluids operating temperature 200°C
- Available with external bypass valve
- Marine class certification upon request

FIG90 2"

Internal Gear Pump with 90° Flanged Connections



Pump Performance:

Flow rate:	15 m ³ /h
Pressure:	1 ~ 14 Bar
Temperature:	0 ~ 200°C
Speed:	500 rpm
Viscosity:	20 ~ 55,000cst

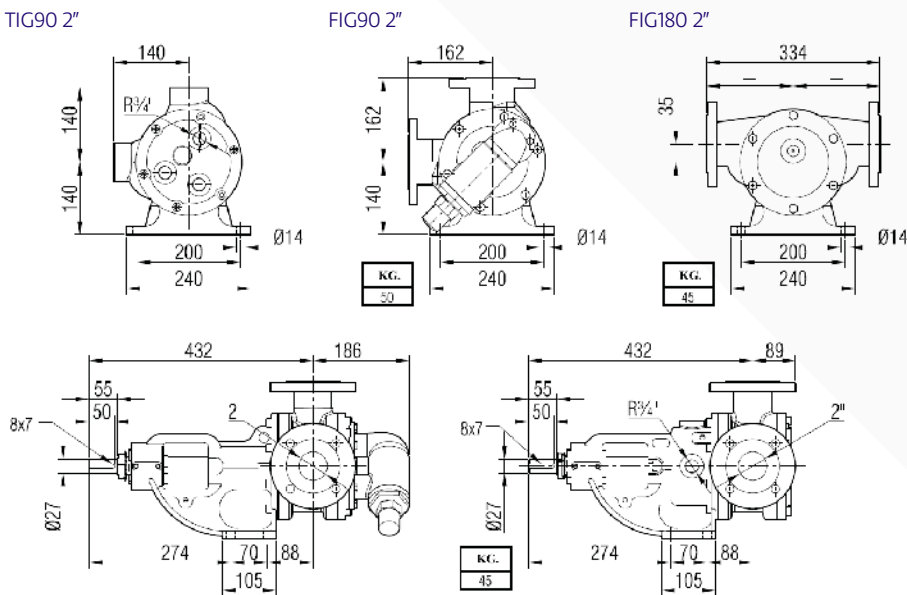
Material Options:

Pump Covers:	Cast Iron, Ductile Iron, Cast Steel, AISI 304/316 CrNi Stainless Steel
Gears:	Ductile Iron, Cast Steel, AISI 304/316 CrNi Stainless Steel
Bearings:	Snbz 12 Bronze, Carbon Graphite, Silicon Carbide, Hard Metal Coated Steel, Bearing
Sealing:	Soft Seal or Packing Gland, Rotatherm Seal, Lip Seal, Mechanical Seal, Cartridge Tyre Mechanical Seal

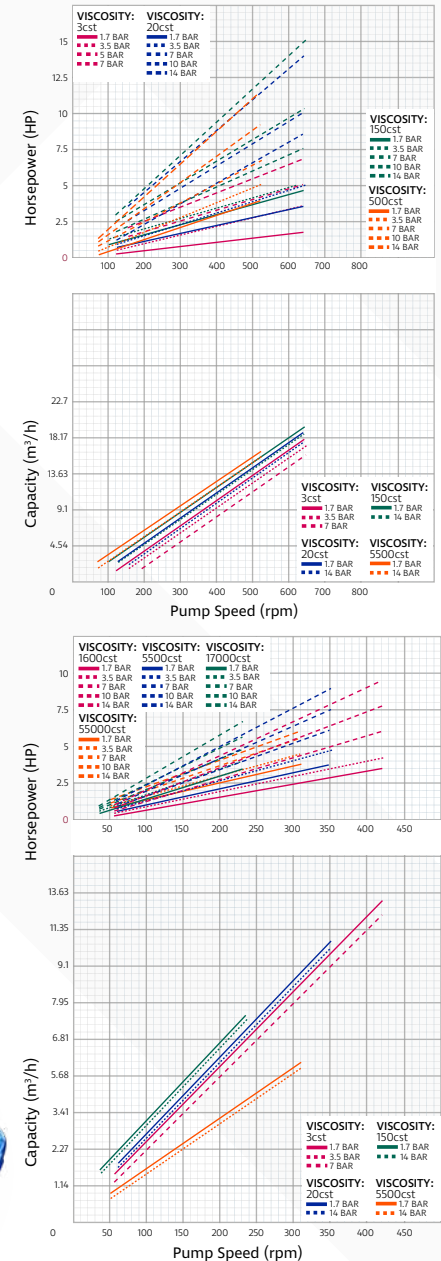
Capacity and Power Table:

FIG90 2" Capacity and Power Table						
Capacity (m ³ /h)	Speed (rpm)	Pressure				Viscosity
		2.5 Bar	5 Bar	7.5 Bar	10 Bar	
1,2	60	0.7Kw	1.1Kw	1.5Kw	1.5Kw	17000cst
1,5	80	1.1Kw	1.5Kw	2.2Kw	2.2Kw	5500cst
2	100	1.1Kw	1.5Kw	2.2Kw	2.2Kw	5500cst
8	280	2.2Kw	2.9Kw	4Kw	5.5Kw	5500cst
10	340	2.2Kw	2.9Kw	4Kw	5.5Kw	150cst
12	400	2.9Kw	4Kw	4Kw	5.5Kw	500cst
13,5	450	2.9Kw	4Kw	5.5Kw	5.5Kw	150cst

Pump Dimensions:



Performance Curves:



Do you have any questions about which fluids and industries are suitable for your applications?
Talk to a member our technical team on +44 (0) 1773 302 660



Coupling Dimensions Gearbox Drive

FIG90 2"

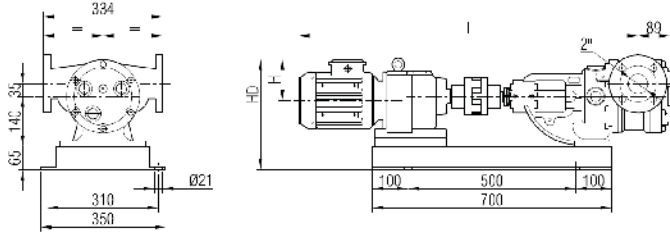


FIG180 2"

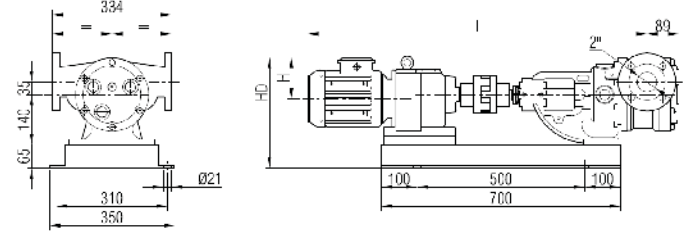
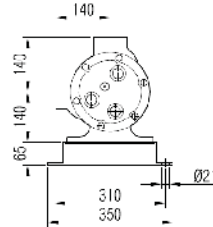


FIG90 2" Coupling Gearbox Drive Dimensions

Motor Power & Speed		Motor	I	HD	H	Kg
Power	Speed (rpm)					
0.75Kw	20/55	IRAM63/80M	950	311	118	115
1.1Kw	27/104	IRAM63/90S	976	325	132	118
1.5Kw	33/98	IRAM63/90L	1001		120	
2.2-3Kw	47/98	IRAM63/100L	1042	334	141	124/127
4Kw	104/126	IRAM63/112M	1063	342	149	129

FIG90 2"



TIG90 2"

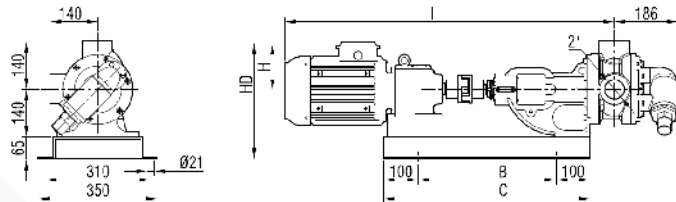


FIG180 2"

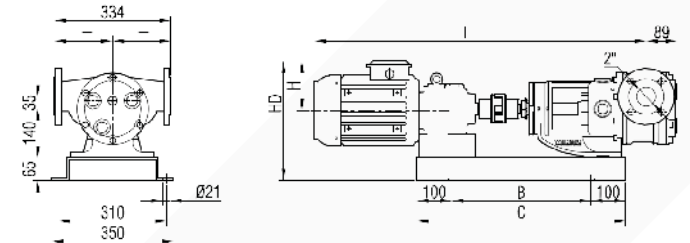
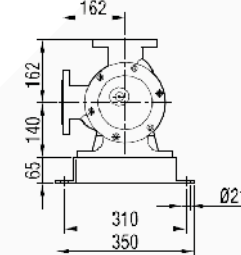


FIG90 2" Coupling Gearbox Drive Dimensions

Motor Power & Speed		Motor	I	HD	H	B	C	Kg	
Power	Speed (rpm)								
1.1Kw	60/380	IRAM52/90S	918	332	132	420	620	98	
1.5Kw	90/480	IRAM52/90L	943					100	
2.2Kw	50/234	IRAM62/C90L	1001	325	500	700		117	
3Kw	65/240	IRAM62/100L	1045	334				141	125
4Kw	87/480	IRAM62/112M	1065	342				149	127/142
5.5Kw	210/450	IRAM62/C112M							
5.5Kw	75/210	IRAM72/132S	1151	371	182	600	800	148	

FIG90 2"



Belt Driven Pump Dimensions

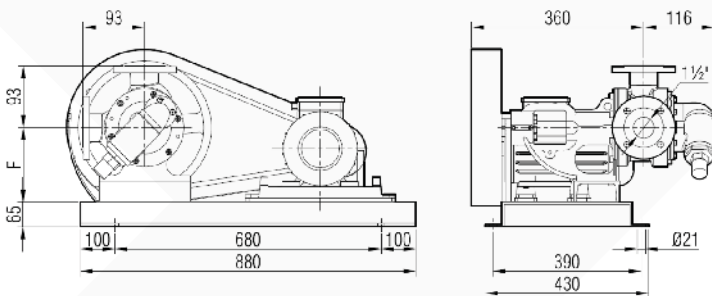


FIG90 2" Belt Driven Pump Dimensions

Motor Power & Speed		Pump Speeds				F(1)	F(2)	F(3)	F(4)	B	C	D	E	Kg
Power	Motor	N(1)	N(1)	N(1)	N(1)									
2.2Kw	100L													140
3Kw	100L													150
4Kw	112M									680	880	390	430	155
5.5Kw	132S	450	400	350	310	140	195	195	250					165
7.5Kw	132M													175
11Kw	160M													230
15Kw	160L									950	1150	530	570	240



FIG90 2.5"

Internal Gear Pump with 90° Flanged Connections



Pump Performance:

Flow rate:	25.5 m ³ /h
Pressure:	1 ~ 14 Bar
Temperature:	0 ~ 200°C
Speed:	500 rpm
Viscosity:	20 ~ 55,000cst

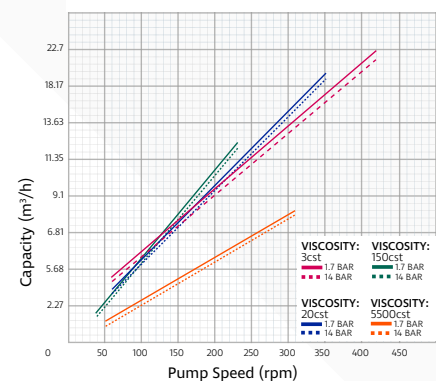
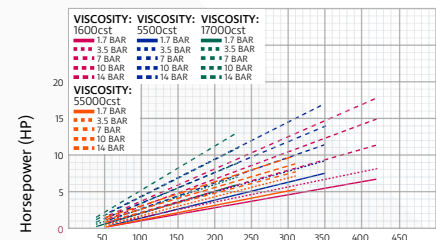
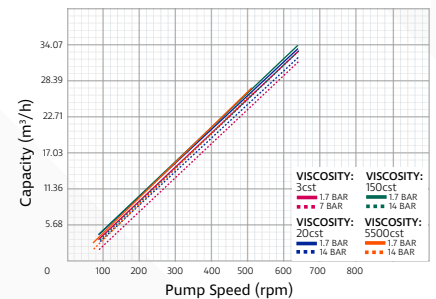
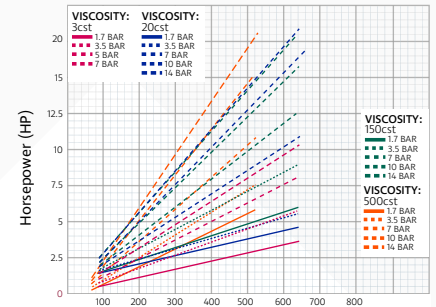
Material Options:

Pump Covers:	Cast Iron, Ductile Iron, Cast Steel, AISI 304/316 CrNi Stainless Steel
Gears:	Ductile Iron, Cast Steel, AISI 304/316 CrNi Stainless Steel
Bearings:	Snb2 12 Bronze, Carbon Graphite, Silicon Carbide, Hard Metal Coated Steel, Bearing
Sealing:	Soft Seal or Packing Gland, Rotatherm Seal, Lip Seal, Mechanical Seal, Cartridge Tyre Mechanical Seal

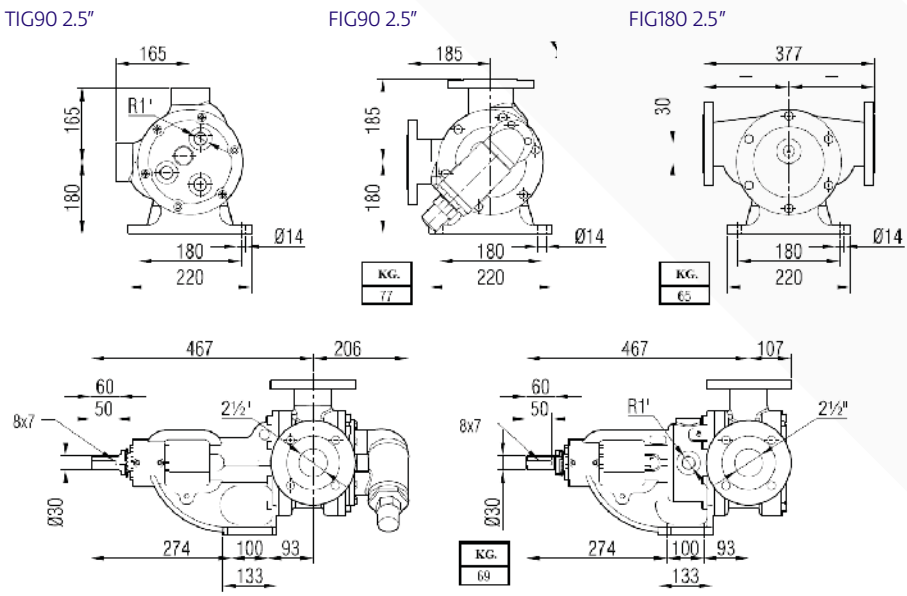
Capacity and Power Table:

FIG90 2.5" Capacity and Power Table						
Capacity (m ³ /h)	Speed (rpm)	Pressure				Viscosity
		2.5 Bar	5 Bar	7.5 Bar	10 Bar	
3	60	1.5Kw	1.5Kw	2.2Kw	2.2Kw	17000cst
4	80	1.5Kw	2.2Kw	2.9Kw	2.9Kw	5500cst
5	100	2.2Kw	2.9Kw	4Kw	4Kw	5500cst
10.5	200	4Kw	5.5Kw	5.5Kw	7.5Kw	5500cst
13	250	4Kw	5.5Kw	5.5Kw	7.5Kw	150cst
18	350	4Kw	5.5Kw	7.5Kw	11Kw	500cst
23	450	4Kw	5.5Kw	7.5Kw	11Kw	150cst

Performance Curves:



Pump Dimensions:



Want to know more technical information?
 Talk to a member our technical team on +44 (0) 1773 302 660 to discuss any technical enquiries you may have.



Coupling Dimensions Gearbox Drive

FIG90 2.5"

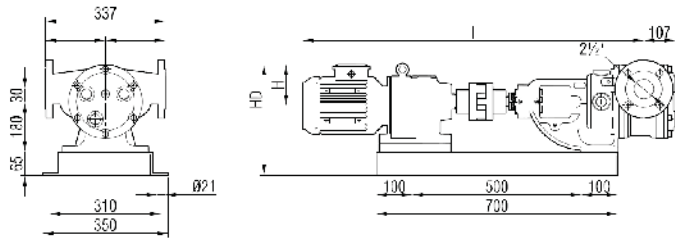


FIG180 2.5"

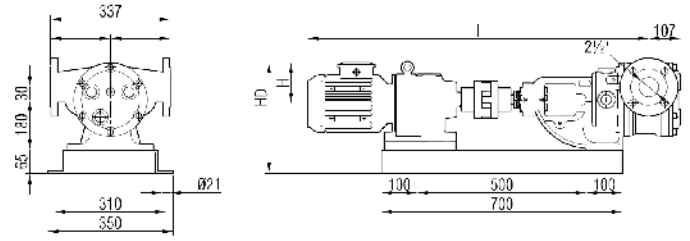
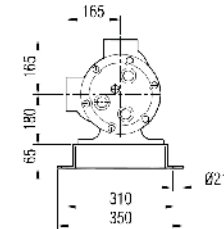


FIG90 2.5" Internal Gear Pump Dimensions

Motor Power & Speed			I	HD	H	Kg
Power	Speed (rpm)	Motor				
3Kw	47/98 rpm	IRAM63/100L	1077	175	141	150 153
4Kw	87/93 rpm	IRAM63/112M	1098	383	149	155

FIG90 2.5"



TIG90 2.5"

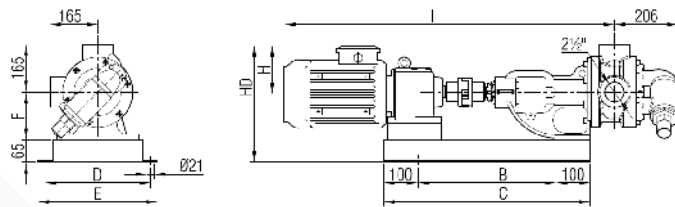


FIG180 2.5"

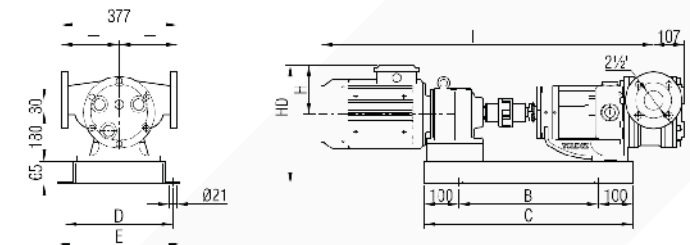
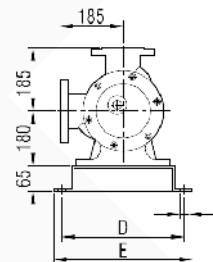


FIG90 2.5" Internal Gear Pump Dimensions

Motor Power & Speed			I	HD	H	B	C	B	C	Kg
Power	Speed (rpm)	Motor								
4Kw	687/480	IRAM62/112M	1098	383	149	500	700	500	700	153 168
5.5Kw	210/450	IRAM62/C112M								179
5.5Kw	75/210	IRAM62/132S	1190	411	182	600	800	600	800	125
7.5Kw	93/450	IRAM72/132M	1236							190 192
11Kw	200/450	IRAM72/132M	1420							330
15Kw	130/450	IRAM82/160L	1420	457	225	680		680		

FIG90 2.5"



Belt Driven Pump Dimensions

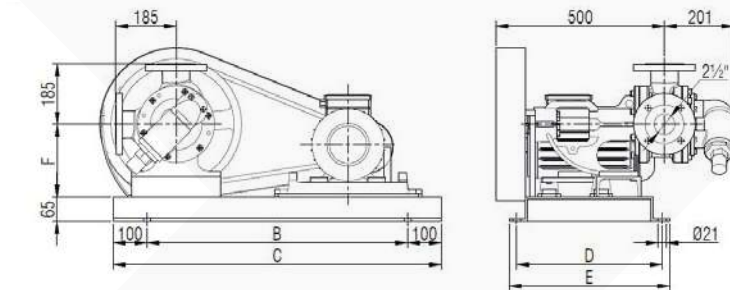


FIG90 2.5" Belt Driven Pump Dimensions

Motor Power & Speed		Pump Speeds				F(1)	F(2)	F(3)	F(4)	B	C	D	E	Kg
Power	Motor	N(1)	N(1)	N(1)	N(1)									
4Kw	112M	450	400	350	310	180	180	245	245	680	880	390	430	180
5.5Kw	132S					205								
7.5Kw	132M					205								
11Kw	160M					260								



FIG90 3"

Internal Gear Pump with 90° Flanged Connections



Pump Performance:

Flow rate:	32 m ³ /h
Pressure:	1 ~ 14 Bar
Temperature:	0 ~ 200°C
Speed:	420 rpm
Viscosity:	20 ~ 55,000cst

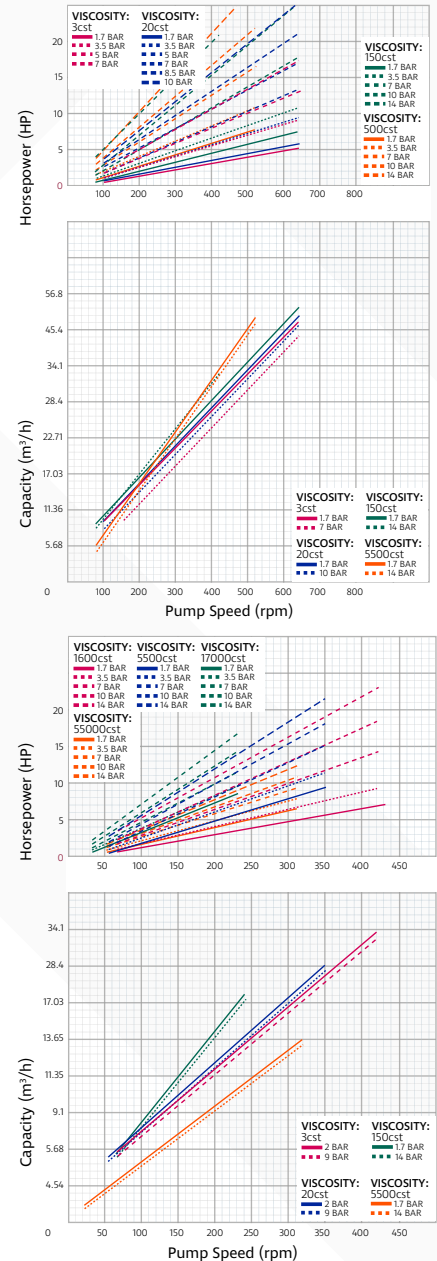
Material Options:

Pump Covers:	Cast Iron, Ductile Iron, Cast Steel, AISI 304/316 CrNi Stainless Steel
Gears:	Ductile Iron, Cast Steel, AISI 304/316 CrNi Stainless Steel
Bearings:	Snb2 12 Bronze, Carbon Graphite, Silicon Carbide, Hard Metal Coated Steel, Bearing
Sealing:	Soft Seal or Packing Gland, Rotatherm Seal, Lip Seal, Mechanical Seal, Cartridge Tyre Mechanical Seal

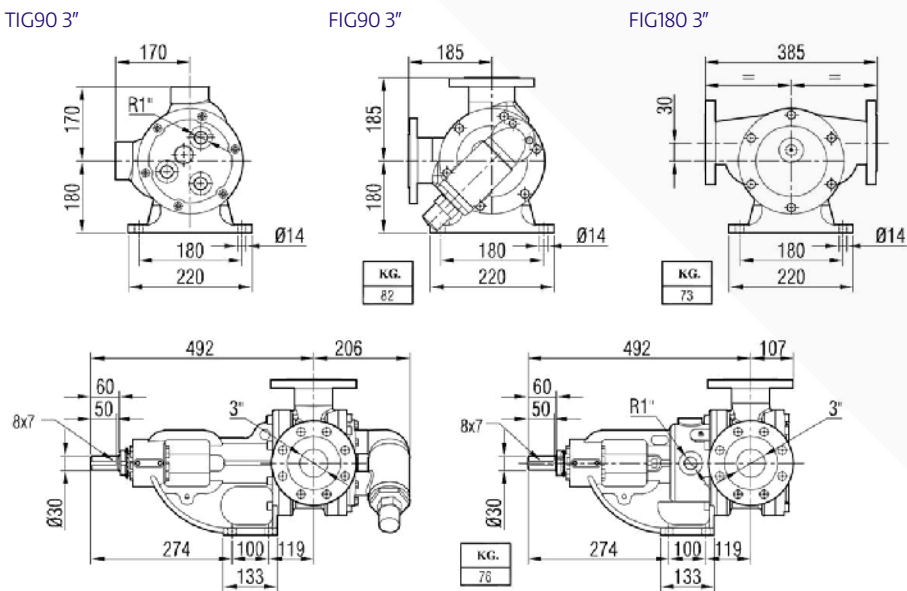
Capacity and Power Table:

FIG90 3" Capacity and Power Table						
Capacity (m ³ /h)	Speed (rpm)	Pressure				Viscosity
		2.5 Bar	5 Bar	7.5 Bar	10 Bar	
4	60	2.2Kw	2.9Kw	4.1Kw	4.1Kw	17000cst
5	80	2.9Kw	4.1Kw	4.1Kw	4.1Kw	5500cst
6	100	2.9Kw	4.1Kw	4.1Kw	5.5Kw	5500cst
16	200	5.5Kw	7.5Kw	7.5Kw	11Kw	17000cst
22	280	5.5Kw	7.5Kw	11Kw	11Kw	5500cst
27	350	5.5Kw	7.5Kw	11Kw	15Kw	1600cst
32	400	5.5Kw	11Kw	11Kw	15Kw	500cst

Performance Curves:



Pump Dimensions:



Coupling Dimensions Gearbox Drive

FIG90 3"

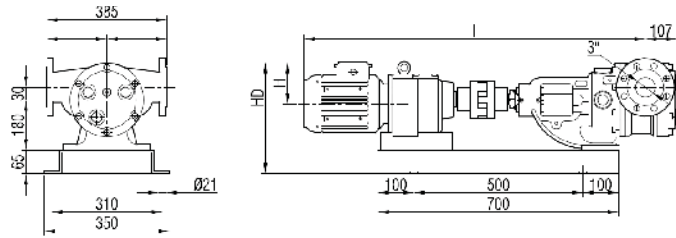


FIG180 3"

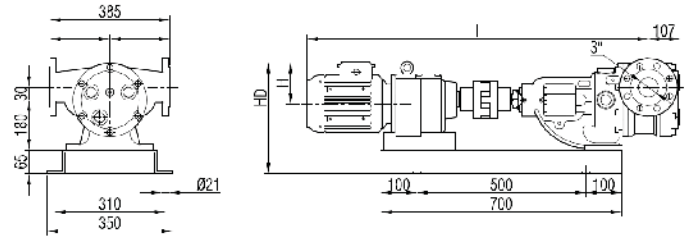


FIG90 3" Coupling Gearbox Drive Dimensions

Motor Power & Speed			I	HD	H	Kg	
Power	Speed (rpm)	Motor					
2.2-3Kw	47/98	IRAM63/100L	1077	375	141	150	153
4Kw	87/93	IRAM63/112M	1098	383	149		155

FIG90 3"

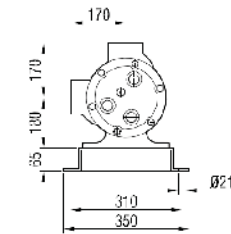


FIG90 3"

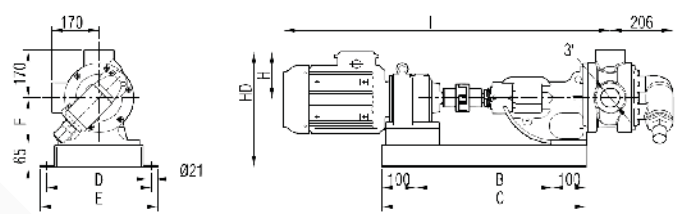


FIG180 3"

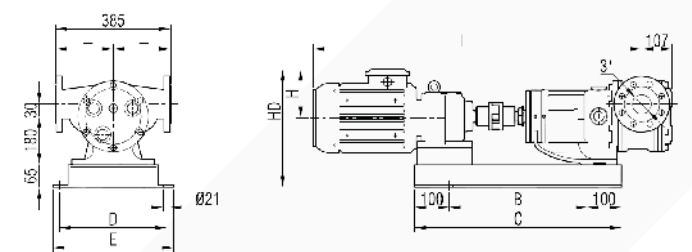
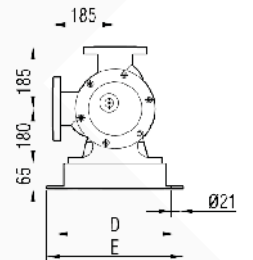


FIG90 3" Coupling Gearbox Drive Dimensions

Motor Power & Speed			I	HD	H	B	C	B	C	Kg
Power	Speed (rpm)	Motor								
4Kw	87/480	IRAM62/112M	1123	383	149	500	700			159/174
5.5Kw	210/450	IRAM62/C112M								
5.5Kw	75/210	IRAM72/132S	1215					310	350	185
7.5Kw	93/450	IRAM72/132M	411	182	600	800				125
11Kw	200/450	IRAM72/132M	1261							
15Kw	130/450	IRAM82/160L	1446	457	225	680		390	430	336

FIG90 23"



Belt Driven Pump Dimensions

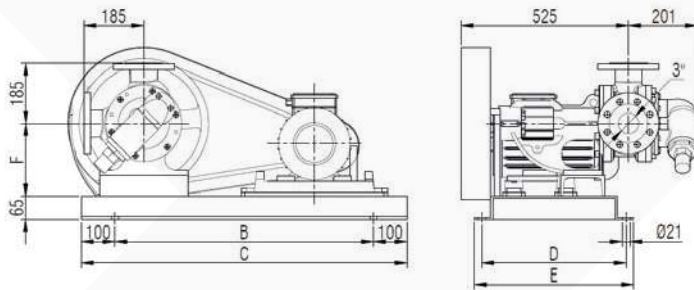


FIG90 3" Belt Driven Pump Dimensions

Motor Power & Speed		Pump Speeds				F(1)	F(2)	F(3)	F(4)	B	C	D	E	Kg
Power	Motor	N(1)	N(1)	N(1)	N(1)									
5.5Kw	132S	450	400	350	310	180	180	245	245	680	880	390	430	205
7.5Kw	132M													
11Kw	160M									950	1150	530	570	270

Do you have any questions about which fluids and industries are suitable for your applications?

Talk to one of our technical people about your application on +44 (0) 1773 302 660

FIG90 4"

Internal Gear Pump with 90° Flanged Connections



Pump Performance:

Flow rate:	55 m ³ /h
Pressure:	1 ~ 14 Bar
Temperature:	0 ~ 200°C
Speed:	400 rpm
Viscosity:	20 ~ 55,000cst

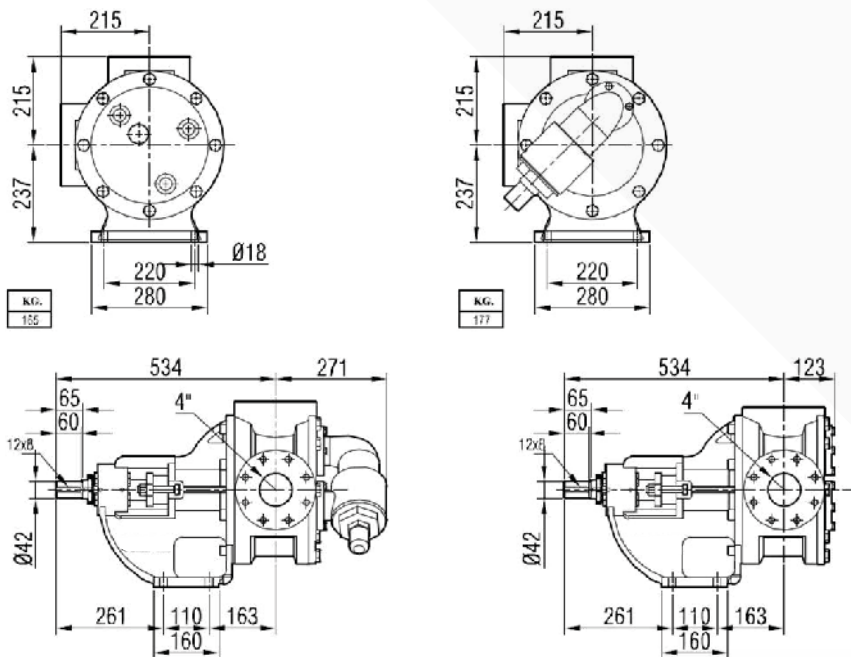
Material Options:

Pump Covers:	Cast Iron, Ductile Iron, Cast Steel, AISI 304/316 CrNi Stainless Steel
Gears:	Ductile Iron, Cast Steel, AISI 304/316 CrNi Stainless Steel
Bearings:	Snb2 12 Bronze, Carbon Graphite, Silicon Carbide, Hard Metal Coated Steel, Bearing
Sealing:	Soft Seal or Packing Gland, Rotatherm Seal, Lip Seal, Mechanical Seal, Cartridge Tyre Mechanical Seal

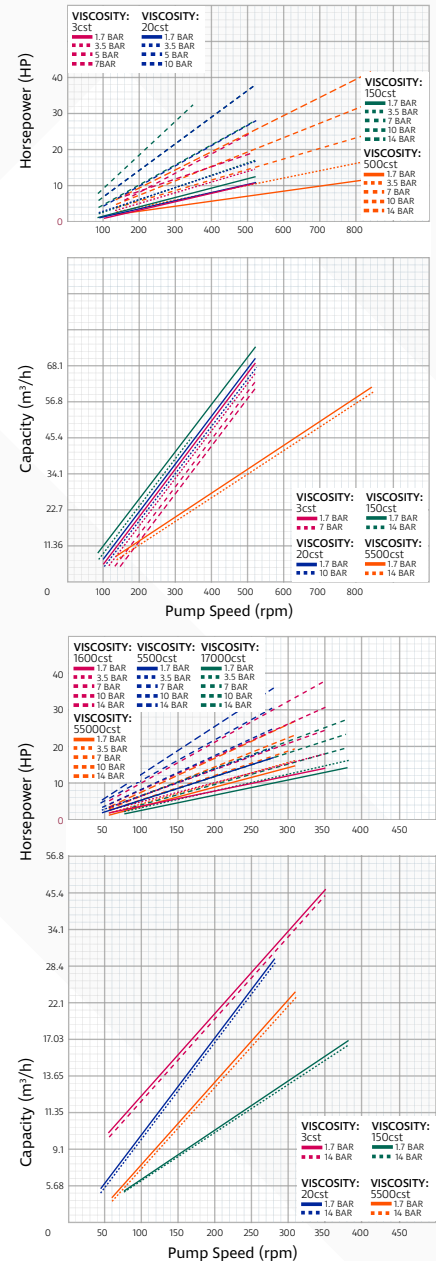
Capacity and Power Table:

FIG90 4" Capacity and Power Table						
Capacity (m ³ /h)	Speed (rpm)	Pressure				Viscosity
		2.5 Bar	5 Bar	7.5 Bar	10 Bar	
8	60	4Kw	4Kw	5.5Kw	5.5Kw	17000cst
10	80	5.5Kw	5.5Kw	7.5Kw	7.5Kw	5500cst
12	100	5.5Kw	7.5Kw	7.5Kw	7.5Kw	5500cst
34	250	11Kw	15Kw	19Kw	22.5Kw	5500cst
42	300	11Kw	15Kw	19Kw	22.5Kw	1600cst
50	350	11Kw	15Kw	19Kw	22.5Kw	500cst
55	400	11Kw	15Kw	19Kw	22.5Kw	150cst

Pump Dimensions:



Performance Curves:



Want to know more technical information?

Talk to a member our technical team on +44 (0) 1773 302 660 to discuss any technical enquiries you may have.



Coupling Dimensions Gearbox Drive

TIG90 4"

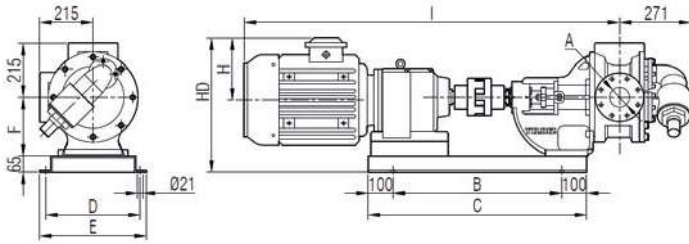


FIG90 4" Coupling Gearbox Drive Dimensions												
Motor Power & Speed			A	I	HD	H	B	C	D	E	F	Kg
Power	Speed (rpm)	Motor										
11Kw	200/400	IRAM72/C132M	DN80/ DN100	1315	468	182	680	880	310	350	237	300
15Kw	130/400	IRAM82/160L		1500	513	225						440
18.5Kw	159/400	IRAM82/180M		1512	538	248	600	1030	450	490		460
22Kw	130/350	IRAM92/180L		1705	542	248						512
30Kw	90/350	IRAM102/200L		1737	569	275	950	1150	430	570		651

Coupling Dimensions Gearbox Drive

TIG90 4"

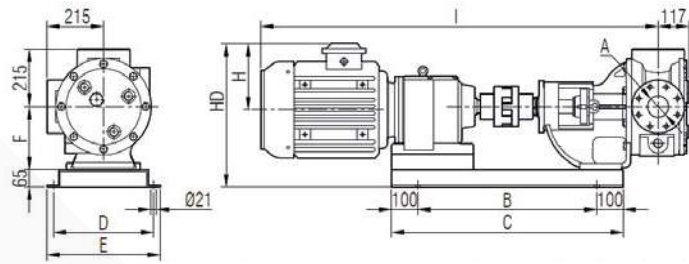


FIG90 4" Coupling Gearbox Drive Dimensions												
Motor Power & Speed			A	I	HD	H	B	C	D	E	F	Kg
Power	Speed (rpm)	Motor										
4Kw	55/95	IRAM73/112M	DN80/ DN100	1202	427	141					237	274
5.5Kw	75/950	IRAM73/132S		1222	435	149	680	880	390	430		287
7.5Kw	93/104	IRAM73/132M		1315	468	182						298
7.5Kw	57/91	IRAM83/132M		1390	460		830	1030	450	490		342
11Kw	40/57	IRAM93/160M		1542	505	225						454

Belt Driven Pump Dimensions

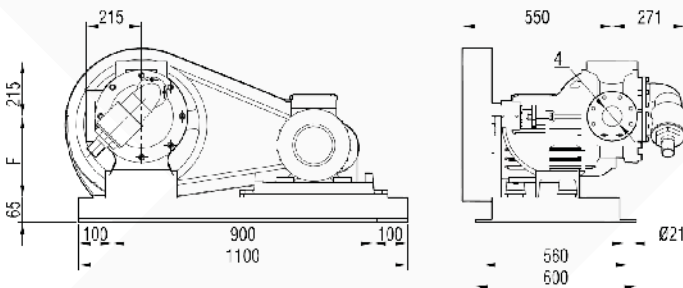


FIG90 4" Belt Driven Pump Dimensions											
Motor Power & Speed		Pump Speeds				F ₍₁₎	F ₍₂₎	F ₍₃₎	F ₍₄₎	Kg	
Power	Motor	N ₍₁₎	N ₍₁₎	N ₍₁₎	N ₍₁₎						
11Kw	160M	450	400	350	310	237	237	237	237	375	
15Kw	160S									385	
18.5Kw	180M									410	
22Kw	180L									425	

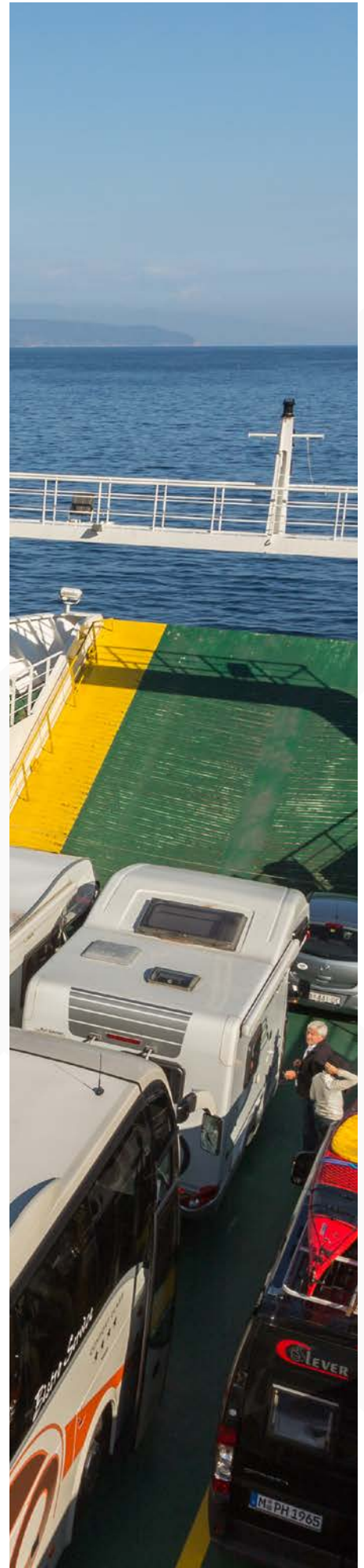


FIG90 5"

Internal Gear Pump with 90° Flanged Connections



Pump Performance:

Flow rate:	170 m ³ /h
Pressure:	1 ~ 9 Bar
Temperature:	0 ~ 200°C
Speed:	450 rpm
Viscosity:	20 ~ 55,000cst

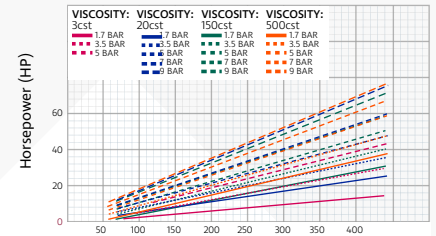
Material Options:

Pump Covers:	Cast Iron, Ductile Iron, Cast Steel, AISI 304/316 CrNi Stainless Steel
Gears:	Ductile Iron, Cast Steel, AISI 304/316 CrNi Stainless Steel
Bearings:	Snb2 12 Bronze, Carbon Graphite, Silicon Carbide, Hard Metal Coated Steel, Bearing
Sealing:	Soft Seal or Packing Gland, Rotatherm Seal, Lip Seal, Mechanical Seal, Cartridge Tyre Mechanical Seal

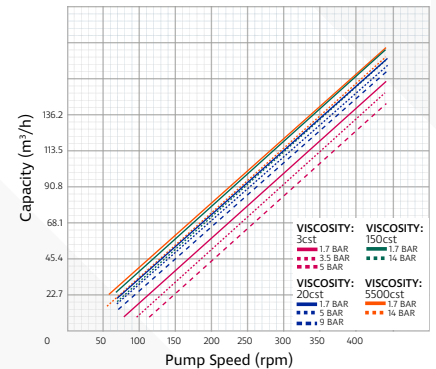
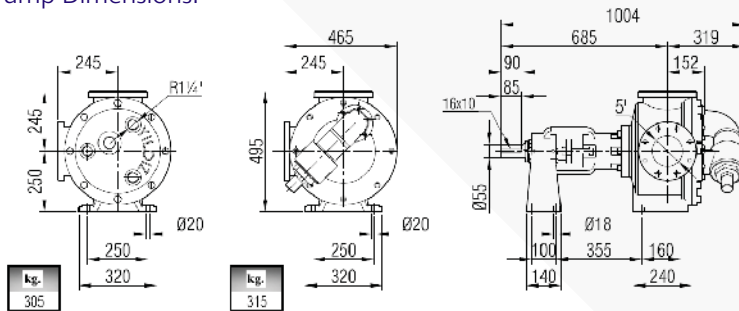
Capacity and Power Table:

FIG90 5" Capacity and Power Table						
Capacity (m ³ /h)	Speed (rpm)	Pressure				Viscosity
		3 Bar	5 Bar	7 Bar	9 Bar	
68	175	22.5Kw	30Kw	30Kw	37Kw	5500cst
90	225	22.5Kw	30Kw	30Kw	37Kw	1600cst
105	275	22.5Kw	30Kw	37Kw	45Kw	500cst
135	350	22.5Kw	30Kw	37Kw	45Kw	150cst

Performance Curves:



Pump Dimensions:



Coupling Dimensions Gearbox Drive

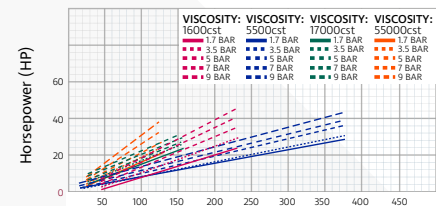
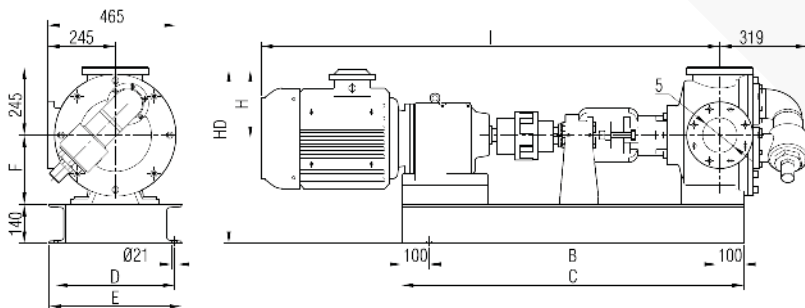


FIG90 5" Coupling Gearbox Drive Dimensions												
Motor Power & Speed			A	I	HD	H	B	C	D	E	F	Kg
Power	Speed (rpm)	Motor										
18.5Kw	145/350	IRAM82/180M	1665	626	248	1040	1240					667
22Kw	105/350	IRAM92/180L	1783	617		1110	1310	430	480			712
30Kw	204/350	IRAM92/200L	1822	644	275					250	250	767
37Kw	89/350	IRAM102/225S	1913		285	1200	1400	520	570			872
45Kw	113/350	IRAM102/225S	1942	654								935

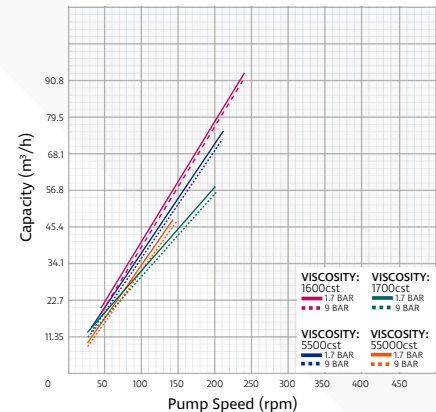


FIG90 6" Internal Gear Pump with 90° Flanged Connections



Pump Performance:

Flow rate:	135 m ³ /h
Pressure:	1 ~ 9 Bar
Temperature:	0 ~ 200°C
Speed:	350 rpm
Viscosity:	20 ~ 55,000cst

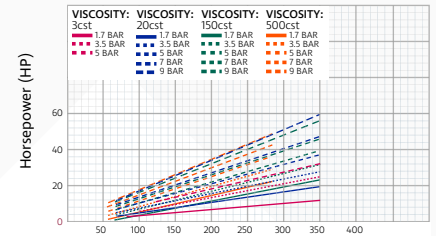
Material Options:

Pump Covers:	Cast Iron, Ductile Iron, Cast Steel, AISI 304/316 CrNi Stainless Steel
Gears:	Ductile Iron, Cast Steel, AISI 304/316 CrNi Stainless Steel
Bearings:	Snbz 12 Bronze, Carbon Graphite, Silicon Carbide, Hard Metal Coated Steel, Bearing
Sealing:	Soft Seal or Packing Gland, Rotatherm Seal, Lip Seal, Mechanical Seal, Cartridge Tyre Mechanical Seal

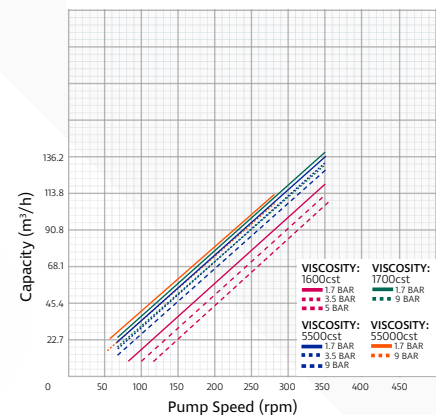
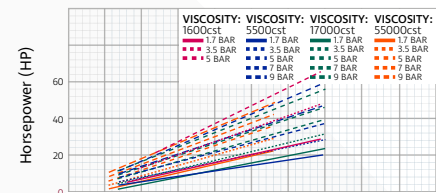
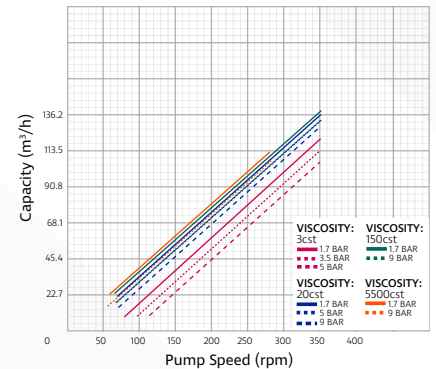
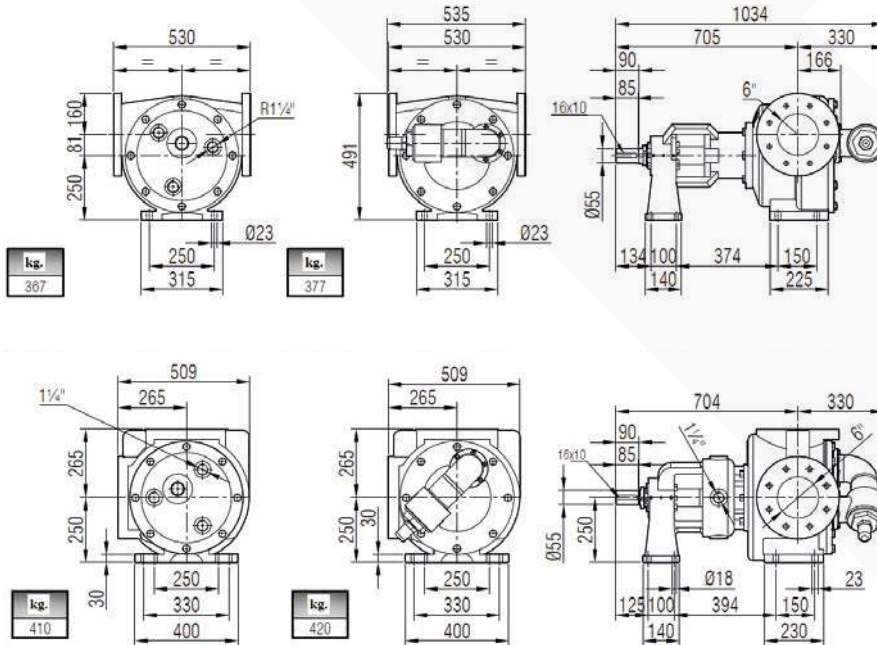
Capacity and Power Table:

FIG90 6" Capacity and Power Table						
Capacity (m ³ /h)	Speed (rpm)	Pressure				Viscosity
		3 Bar	5 Bar	7 Bar	9 Bar	
46	125	19Kw	22.5Kw	30Kw	30Kw	55000cst
58	150	22.5Kw	30Kw	30Kw	30Kw	17000cst
68	175	22.5Kw	30Kw	30Kw	45Kw	5500cst
90	225	22.5Kw	30Kw	45Kw	45Kw	1600cst

Performance Curves:



Pump Dimensions:



Not sure which pump is right for your application?

For further information about our Internal Gear Pumps range... telephone +44 (0) 1773 302 660, email sales@northridgepumps.com or visit www.northridgepumps.com



Coupling Dimensions Gearbox Drive

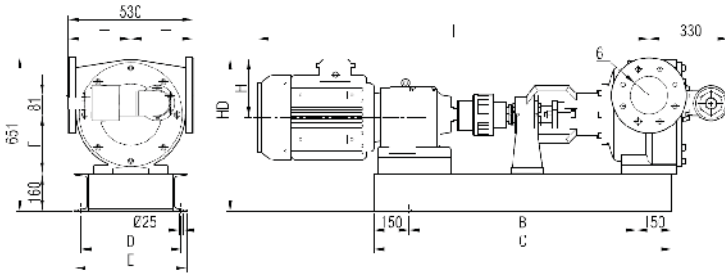


FIG90 6" Coupling Gearbox Drive Dimensions

Motor Power & Speed		Motor	I	HD	H	B	C	D	E	F	Kg
Power	Speed (rpm)										
18.5Kw	145/350	IRAM82/180M	1679	646	248	970	1270	430	490	250	742
22Kw	105/350	IRAM92/180L	1796	637	275	1050	1350				781
30Kw	204/350	IRAM92/200L	1835	664	275	1050	1350	520	580		836
37Kw	89/350	IRAM102/225S	1926	674	285	1130	1430				949
45Kw	113/350	IRAM102/225M	1950	674	285	1130	1430				1012



FIG90 8" Internal Gear Pump with 90° Flanged Connections



Pump Performance:

Flow rate:	200 m ³ /h
Pressure:	1 ~ 9 Bar
Temperature:	0 ~ 200°C
Speed:	220 rpm
Viscosity:	20 ~ 55,000cst

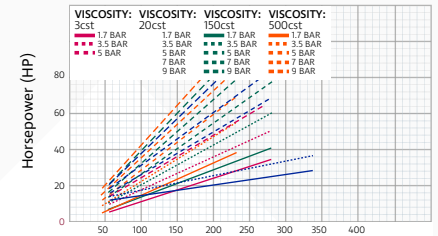
Material Options:

Pump Covers:	Cast Iron, Ductile Iron, Cast Steel, AISI 304/316 CrNi Stainless Steel
Gears:	Ductile Iron, Cast Steel, AISI 304/316 CrNi Stainless Steel
Bearings:	Snb2 12 Bronze, Carbon Graphite, Silicon Carbide, Hard Metal Coated Steel, Bearing
Sealing:	Soft Seal or Packing Gland, Rotatherm Seal, Lip Seal, Mechanical Seal, Cartridge Tyre Mechanical Seal

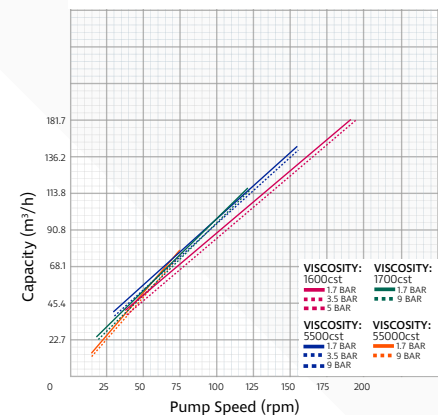
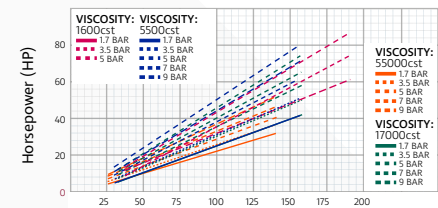
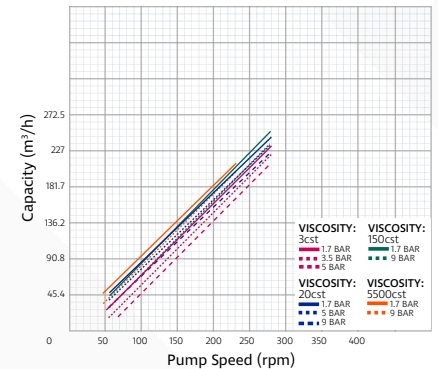
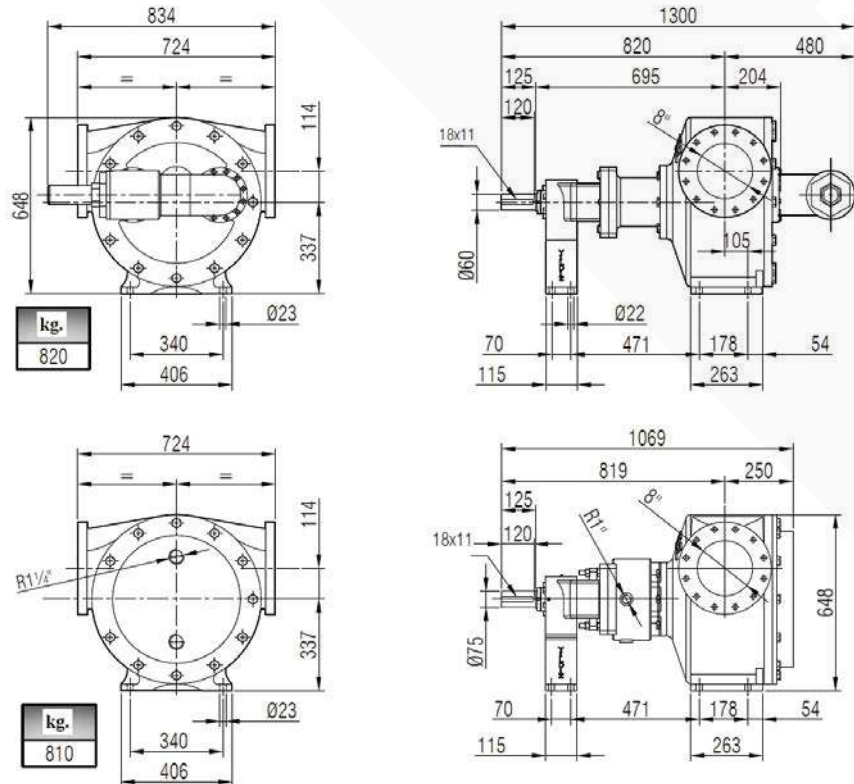
Capacity and Power Table:

FIG90 8" Capacity and Power Table						
Capacity (m ³ /h)	Speed (rpm)	Pressure				Viscosity
		3 Bar	5 Bar	7 Bar	9 Bar	
80	84	30Kw	37Kw	37Kw	45Kw	55,000cst
114	125	37Kw	45Kw	56Kw	56Kw	17000cst
140	155	37Kw	30Kw	56Kw	75Kw	5500cst
174	190	45Kw	30Kw	56Kw	75Kw	1600cst

Performance Curves:



Pump Dimensions:



Coupling Dimensions Gearbox Drive

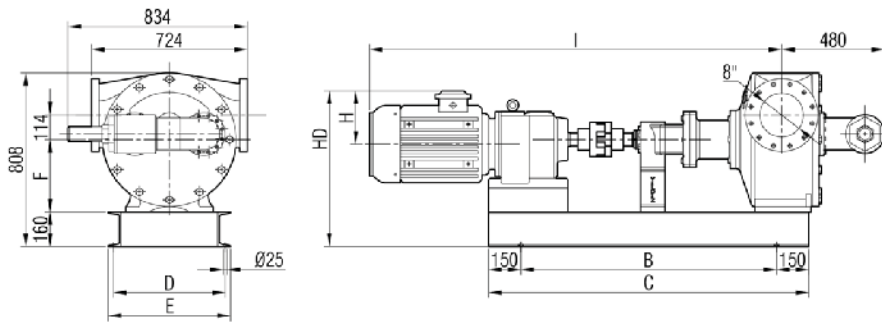


FIG90 8" Coupling Gearbox Drive Dimensions

Motor Power & Speed			I	HD	H	B	C	D	E	F	Kg
Power	Speed (rpm)	Motor									
22Kw	105/350	IRAM92/180L	1918	724	248	1190	1490	520	580	337	1295
30Kw	204/350	IRAM92/200L	1957	751	275	1190	1490	520	580	337	1325
37Kw	89/350	IRAM102/2225S	2044	761	285	1280	1580	520	580	337	1540
45Kw	113/350	IRAM102/225M	2069	761	285	1280	1580	520	580	337	1570

Coupling Dimensions Gearbox Drive

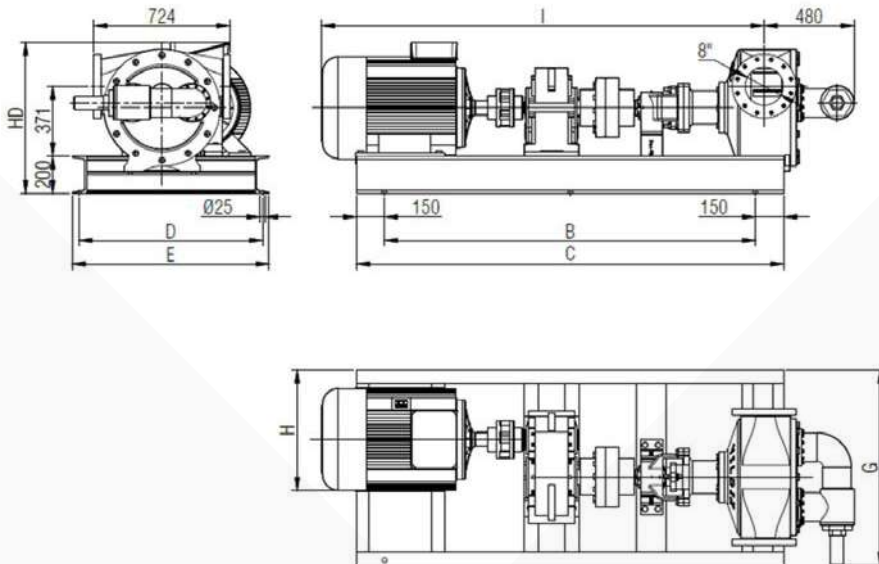


FIG90 8" Coupling Gearbox Drive Dimensions

Motor Power & Speed		A	I	HD	H	B	C	D	E	F	Kg
Power	Speed (rpm)										
37Kw	A200-P9/225S	DN200	2200	741	591	1840	2140				1676
45Kw	A200-P9/225M										1700
55Kw	A200-P9/250M		1803								
75Kw	A200-P9/280S		1931								
90Kw	A200-P9/280M		1985								
110Kw	A200-P9/315S		2168								
132Kw	A200-P9/315M		2250								

Do you have any questions about which fluids and industries are suitable for your applications?

Talk to a member our technical team on +44 (0) 1773 302 660



FIG90 200

Internal Gear Pump with 90° Flanged Connections



Pump Performance:

Flow rate:	15 m ³ /h
Pressure:	1 ~ 14 Bar
Temperature:	0 ~ 200°C
Speed:	900 rpm
Viscosity:	20 ~ 55,000cst

Material Options:

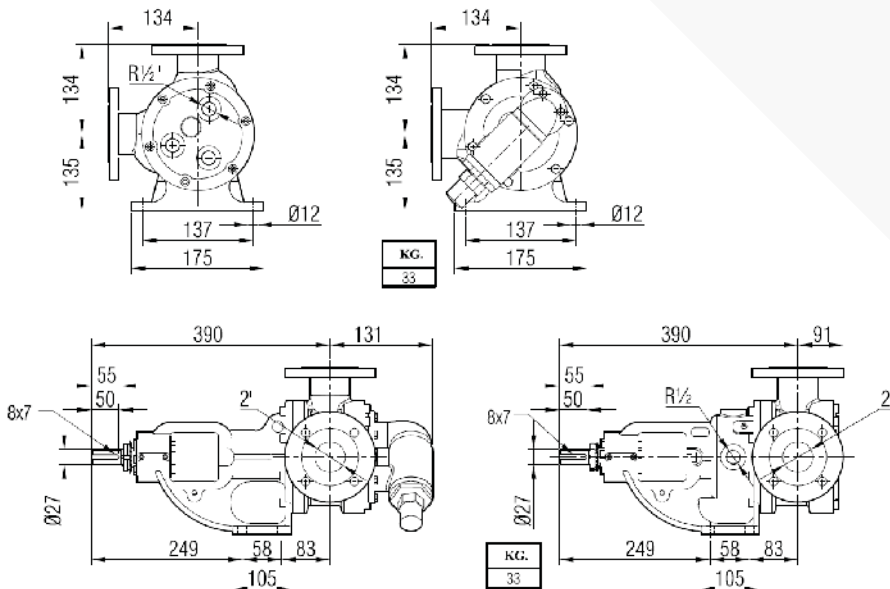
Pump Covers:	Cast Iron, Ductile Iron, Cast Steel, AISI 304/316 CrNi Stainless Steel
Gears:	Ductile Iron, Cast Steel, AISI 304/316 CrNi Stainless Steel
Bearings:	Snbz 12 Bronze, Carbon Graphite, Silicon Carbide, Hard Metal Coated Steel, Bearing
Sealing:	Soft Seal or Packing Gland, Rotatherm Seal, Lip Seal, Mechanical Seal, Cartridge Tyre Mechanical Seal

Capacity and Power Table:

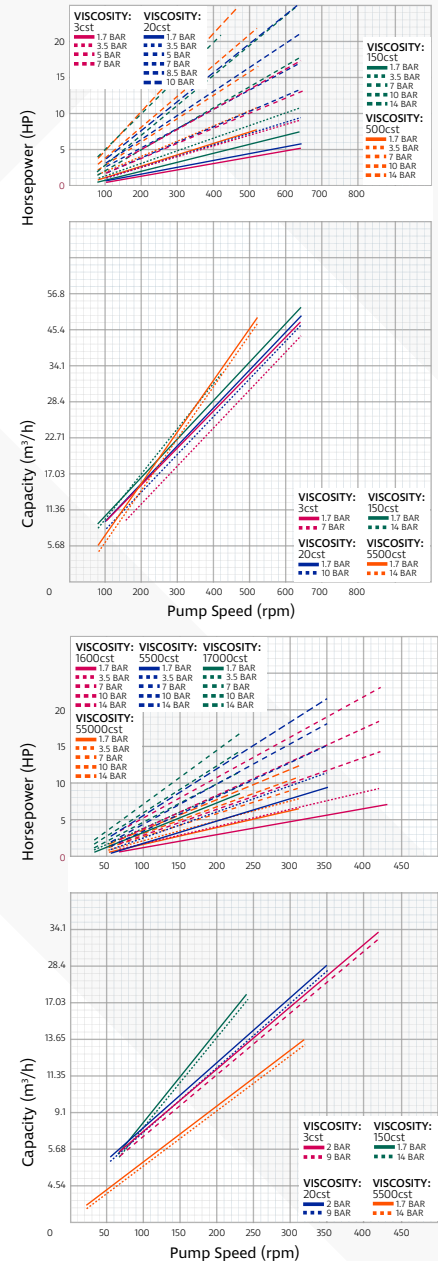
FIG90 200 Capacity and Power Table						
Capacity (m ³ /h)	Speed (rpm)	Pressure				Viscosity
		3 Bar	6 Bar	9 Bar	12 Bar	
0.6	40	0.4	0.5	0.5	0.7	17000cst
0.8	60	0.4	0.5	0.7	0.7	5500cst
1.5	100	0.7	1.1	1.1	1.5	5500cst
3.7	250	1.1	1.5	2.2	2.9	1600cst
5	350	1.5	2.2	2.9	4	500cst
5.5	450	1.5	2.2	2.9	4	150cst
13	900	2.9	4	7.5	7.5	150cst
21	1400	4	7.5	11	11	20cst

Motor Powers		Motor Powers		Motor Powers	
4Kw	1400 rpm	2.9Kw	750 rpm	7.5Kw	900 rpm
Motor Body		Motor Body		Motor Body	
112		132		160	

Pump Dimensions:



Performance Curves:



Coupling Dimensions Motor Drive

TIG90 4"

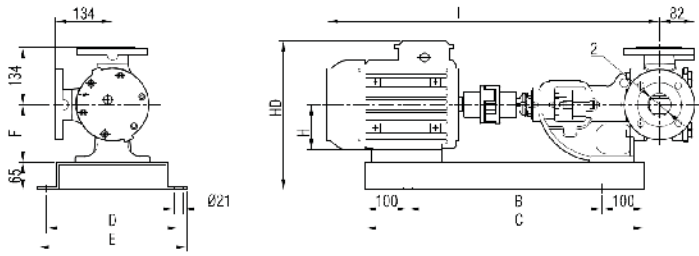


FIG90 200 Coupling Gearbox Drive Dimensions

Motor Power & Speed			I	HD	H	B	C	D	E	F	Kg
Power	Speed (rpm)	Motor									
1.5Kw	750	MOTOR 112M	804	344	112	500	700	310	350	135	83
2.2Kw	900										83
2.2Kw	750	MOTOR 132S	865	367	132	580	780	380	420		92
3Kw	900										93
3Kw	750	MOTOR 132M	903								100
4Kw	900										104

Coupling Dimensions Gearbox Drive

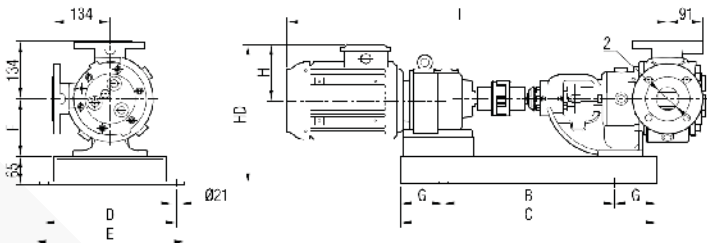


FIG90 200 Coupling Gearbox Drive Dimensions

Motor Power & Speed			I	HD	H	B	C	D	E	F	G	Kg
Power	Speed (rpm)	Motor										
0.75Kw	90/400	IRAM42/80	821	314	118	430	550	260	300	237	60	64
1.5Kw	105/450	IRAM52/90L	901	327	132	420	620	310	350		100	83
3Kw	280/600	IRAM52/100L	930	336	141							500
2.2 - 3Kw	50/234	IRAM62/100L	994	330								
4Kw	87/570	IRAM62/112M	1015	338	149							111

Belt Driven Pump Dimensions

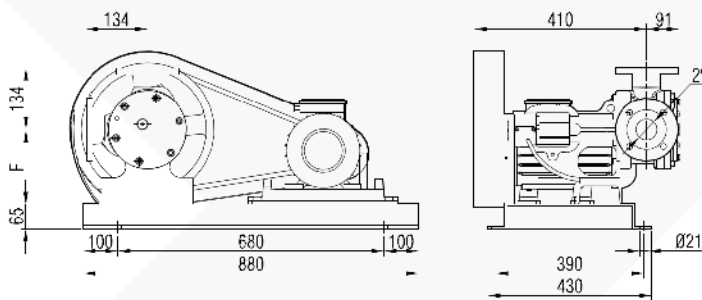


FIG90 200 Pump with Belt Pulley Dimensions

Motor Power & Speed		Pump Speeds				F(1)	F(2)	F(3)	F(4)	Kg
Power	Motor	N(1)	N(1)	N(1)	N(1)					
2.2Kw	100L	450	400	350	310	135	190	190	245	120
3Kw	100L									130
4Kw	112M									135
5.5Kw	132S									145
7.5Kw	132M									155



Not sure which pump is suitable for your application?

For further information about our Internal Gear Pumps range telephone +44 (0) 1773 302 660, email sales@northridgepumps.com or visit www.northridgepumps.com